

FRESH DESIGN.

MADE BY TEAMS.

ONLY IN SOCAL.

PURE

DESIGN AWARDS

I | I D | A
INTERNATIONAL
INTERIOR DESIGN
ASSOCIATION
SOUTHERN CALIFORNIA
CHAPTER

2016 TEAM NOMINATIONS



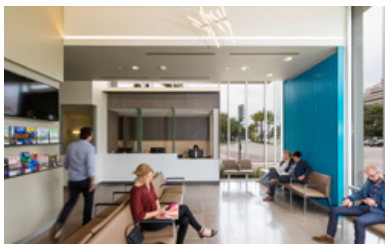
The Cafe at Annenberg

Nominated by: AC Martin
Bernards
Harley Ellis Devereaux
R.W. Smith & Co.



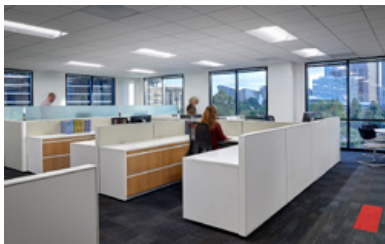
Cal State Northridge, Oasis Wellness Center

Nominated by: LPA, Inc.
CSU Northridge
Hathaway Dinwiddie



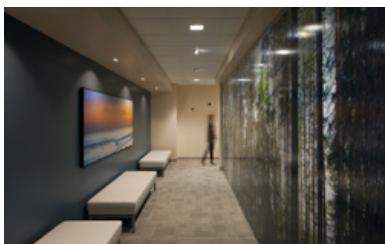
Cedars-Sinai Urgent Care

Nominated by: Abramson Teiger Architects
Innovative Engineering Group, Inc.
KGM Architectural Lighting
Medical Planning, Inc.



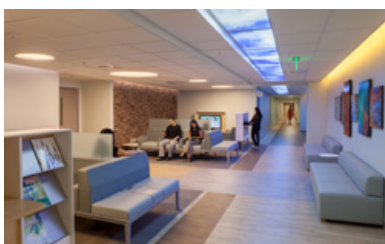
City of Los Angeles Relocation

Nominated by: Gensler, Los Angeles
CBRE
City of Los Angeles
Haworth
Shangri-La Construction
Unisource Solutions



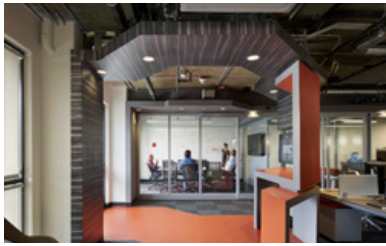
Hazelden Betty Ford West Los Angeles Outpatient Clinic

Nominated by: HGA Architects and Engineers
Green Towne Inc.
Hazelden Betty Ford
Interface



Kaiser Permanente Fontana Medical Center

Nominated by: HMC Architects
EOS Light Panel Systems
Kaiser Permanente
Lighting Design Alliance



META Lab

Nominated by: Harley Ellis Devereaux
 California State University Northridge
 Machone Development
 P2S Engineering, Inc.
 Tangram
 The University Corporation, California State University, Northridge



Museum of Photographic Arts

Nominated by: Gensler, San Diego
 Johnson & Jennings
 McParlane & Associates
 Nixon Christophers
 The Museum of Photographic Arts
 WB Powell, Inc.



Thomas Labs at Caltech

Nominated by: AC Martin
 Brightworks
 Integral Group
 KPFF Consulting Engineers
 RFD
 Swinerton Builders



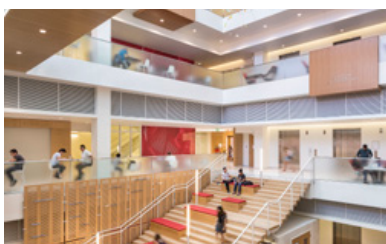
Torrance Memorial Medical Center Lundquist Tower

Nominated by: HMC Architects
 KPFF Consulting Engineers
 McCarthy Building Companies, Inc.
 RHA Landscape Architects - Planners Inc.
 TTG Engineers



Tower Cancer Research Foundation

Nominated by: CDG Interior Design + Architecture
 Beyond Home Theater
 Jules Seltzer Associates
 The Sheridan Group
 TIS Construction Services Inc.
 Tower Cancer Research Foundation



USC, Dr. Verna & Peter Dauterive Hall

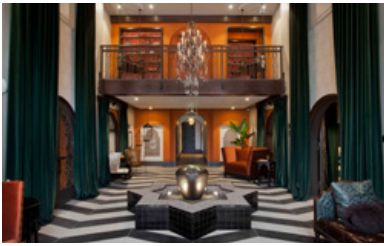
Nominated by: HKS Architects, Inc.
 Edson Design
 IBE Consulting Engineers
 SKA Design



Zev Yaroslavsky Family Support Center

Nominated by: HKS Architects, Inc.
Charles Pankow Builders
Interior Office Solutions
Los Angeles County Department of Public Works
Nabih Youssef Associates

LEARN & SERVE



Broadstone Candara

Nominated by: H. Hendy Associates
Alliance Construction
Alliance Residential
Ann Sacks Tile & Stone
Moen Woodworks
R. Thompson Artworks



Broadstone Coronado

Nominated by: H. Hendy Associates
Alliance Construction
Alliance Residential
R. Thompson Artworks



Commonwealth Business Bank

Nominated by: IA Interior Architects
Armstrong
Orange Bins
Systems Source



CPM Studio

Nominated by: IA Interior Architects
City Constructors, Inc.
CPM One Source, Inc.
Luceplan
The Schneider Group



CTBC Bank

Nominated by: Environetics
3Form
Aleksandar
CTBC
Interior Office Systems
MTI Builders, Inc.



ISAIA

Nominated by: Flex Designs
Ferrari Archetti
ISAIA
Sierra Pacific Constructors
West End Project Management



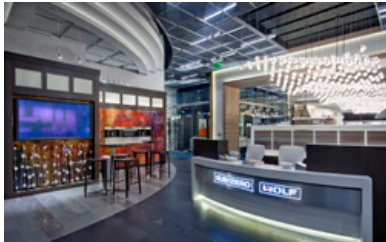
Music Box

Nominated by: Gensler, San Diego
Christopher Konecki
Christopher Puzio
Exist1981
ICE
Product Etcetera



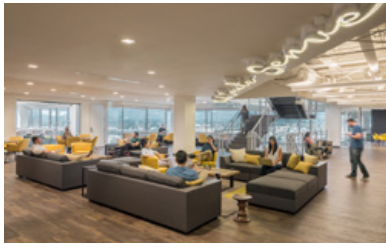
SWAY Modern Coastal Apartments

Nominated by: Cuningham Group Architecture
Alliance Development Services
Mark Tessier Landscape Architecture, Inc.
Studio Collective
The Ruzika Company



Sub-Zero / Wolf Showroom

Nominated by: Zingg Design, Inc.
Driver SPG
HyTech Tile
Penco Engineering, Inc.



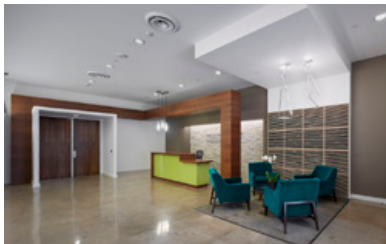
BlackLine Systems

Nominated by: DLR Group
California Lighting Sales
CBRE
CBRE / Fanellipm
Sierra Pacific Contractors
Westfall Commercial Furniture



Boingo Wireless

Nominated by: Gensler, Los Angeles
AMA Project Management
ARC Engineering
Associates Purchasing
Boingo Wireless
Howard Building Corporation



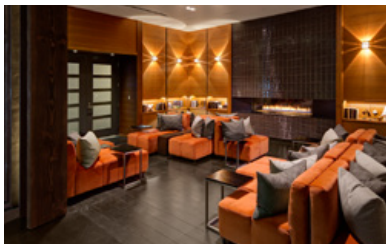
Community Bank

Nominated by: Ex Novo Inc.
Community Bank
Innovative Engineering Group, Inc.
Warner Constructors Inc.



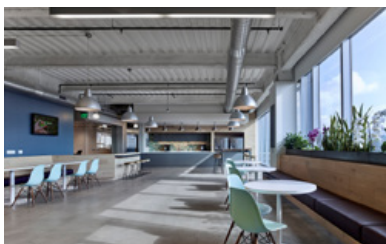
DIRECTV

Nominated by: HOK
ARC Engineering
Clune Construction Company
JLL
Systems Source
Tangram



EV Lofts

Nominated by: Jules Wilson ID
Hollis Brand Culture
Oliver McMillan
VCC



FremantleMedia

Nominated by: Shubin + Donaldson
ARC Engineering
EEI
FremantleMedia
Lighting Design Alliance
Sierra Pacific Constructors



Harbor Distributing

Nominated by: Gensler, Newport Beach
Arco National Construction
Harbor Distributing
Tangram



Hyundai Motor America

Nominated by: Gensler, Los Angeles
Cresa
Hyundai Engineering
Hyundai Motor America
Snyder Langston
Turelk, Inc.



iHerb

Nominated by: Little
Core Strategy
Interior Office Solutions
KPRS
TekWorks



JustFab Inc.

Nominated by: Moshiri Associates Inc.
Clune Construction Company
EGG Office
eSquared Lighting
Seeley Brothers
Tangram Studio



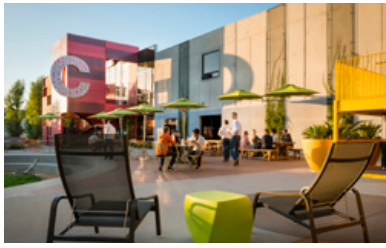
Kennedy Wilson

Nominated by: Wolcott Architecture | Interiors
Coffman Engineers Inc.
L.E. Waters Construction Co.
L.H. Hajnal & Associates
SideMark
Tangram



Mindshare

Nominated by: HOK
ARC Engineering
Clune Construction Company
Mindshare
T:S:P Project Management
Tangram



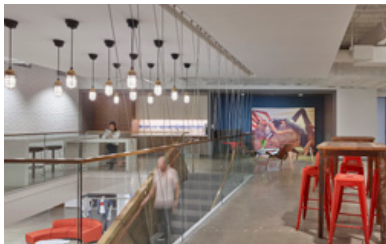
Playa C

Nominated by: Gensler, Newport Beach
 AFD Furniture
 Sierra Pacific Constructors, Inc.
 Wiedenbach Brown



Red Bull

Nominated by: Wolcott Architecture | Interiors
 ARC Engineering
 Howard Building Corporation
 SAW & Associates Inc.
 Structural Focus
 Systems Source



True Religion

Nominated by: Wolcott Architecture | Interiors
 Cushman & Wakefield
 Howard Building Corporation
 Pinnacle
 Syska Hennessy Group
 Tangram Studio



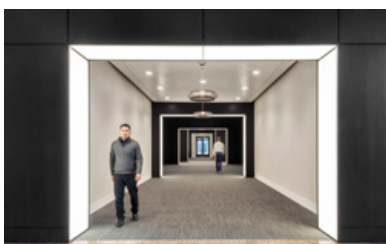
Universal Music Group

Nominated by: Studio V
 ARC Engineering
 Corporate Contractors, Inc.
 Knoll
 Universal Music Group
 Western Office Interiors



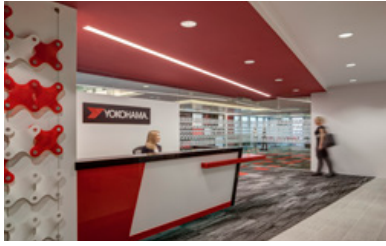
Verizon Digital Media Services

Nominated by: IA Interior Architects
 CBRE
 Swinerton Builders
 Worthe Real Estate Group



Water Garden Interiors

Nominated by: HLW International LLP
 AMA Consulting
 CBRE
 Morley Builders
 Trammell Crow



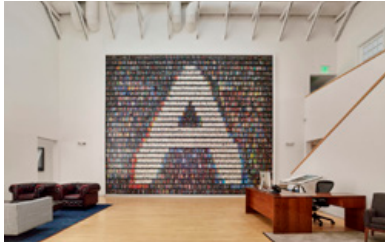
Yokohama Tire Corporation

Nominated by: H. Hendy Associates
CBRE
Graffiti Inc.
JLC Associates
Office Furniture Group
Yokohama Tire Corporation



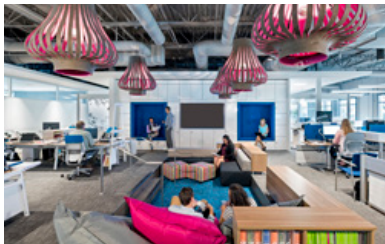
AerCap

Nominated by: HLW International LLP
CBRE
Mata Construction
Savills Studley
Seeley Brothers
Tangram



Annapurna Pictures

Nominated by: Andy Waisler Design
ARC Engineering
Associates Purchasing
EEI
JDM Contractors
Square One Design



BKM

Nominated by: Hollander Design Group
BKM
Coalesse
Irvine Company
Shaw Contract Group
Steelcase



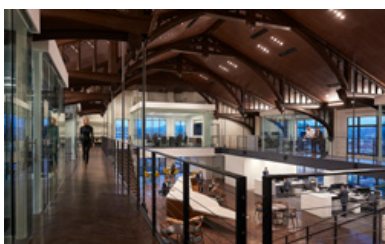
Boston Consulting Group

Nominated by: R&A Architecture + Design Inc
BP Consulting
EGG Office
Howard Building Corporation
Syska Hennesy Group
Tangram Studio



Brookfield Residential

Nominated by: Gensler, Newport Beach
Howard Building Corporation
Tangram
Irvine Company



CBRE Masonic Temple

Nominated by: Gensler, Los Angeles
Caruso Affiliated
CBRE
Kaplan Gehring McCarroll Architectural Lighting
Structural Focus
W.E. O'Neil Construction



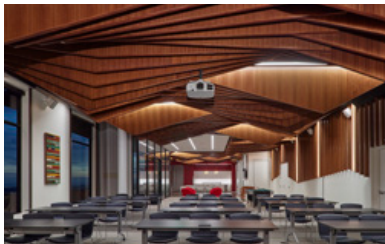
Cubic Corporation

Nominated by: Ware Malcomb
Cubic Corporation
Good & Roberts
Haworth
PMA Project Management Advisors
Unisource Solutions



Cushman & Wakefield

Nominated by: ID Studios Inc.
Cushman & Wakefield
GM Business Interiors
Turner Construction



eHarmony

Nominated by: Wolcott Architecture | Interiors
AM Cabinets
Corporate Contractors, Inc.
Cresa
Simpson Gumpertz & Heger
Systems Source



Entertainment Network

Nominated by: Klawiter and Associates, Inc.
California Lighting Sales
Corporate Contractors, Inc.
Fox Networks Group
Mannington
Unisource Solutions



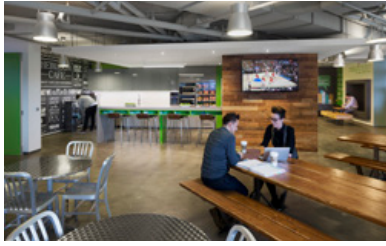
Fiat Chrysler Automobiles

Nominated by: Ware Malcomb
American Interiors
CBRE
DTZ
Fiat Chrysler Automobiles
Servco Builders



Fragomen Worldwide

Nominated by: CDG Interior Design + Architecture
Environmental Contracting Corporation
Fragomen Worldwide
Innovated Engineering Group, Inc.
Kimball Office
Savills Studley



Fuhu

Nominated by: Kamus + Keller Interiors | Architecture
Metropolitan West
Tangram Studio
Warner Constructors



Grand Central Air Terminal

Nominated by: Frederick Fisher and Partners Architects
The Walt Disney Company



Haworth

Nominated by: Perkins+Will
GMB
Haworth
HDLC
Turner Construction



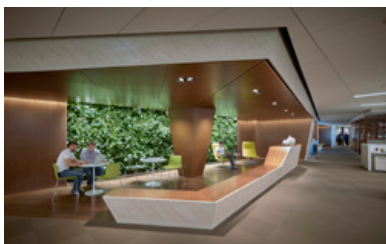
Hueston Hennigan LLP, Los Angeles

Nominated by: SAA
Associates Purchasing
Interscape Construction Inc
SCI Lighting Solutions



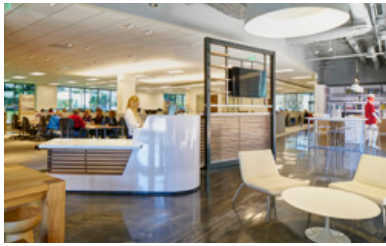
Hueston Hennigan LLP, Orange County

Nominated by: SAA
Associate Purchasing
SCI Lighting Solutions
Irvine Company



Human Longevity Inc.

Nominated by: ZGF Architects LLP
Atelier Ten USA LLC
Human Longevity Inc.
McCarthy Building Companies, Inc.
Montbleau & Associates Inc.



Little - West Coast Office

Nominated by: Little - West Coast Office
Interface
KPRS
Performance Lighting Systems
Tangram



Los Angeles Metropolitan Transportation Authority

Nominated by: RNL Design
McCarthy Building Company
Nabih Youssef Associates
The Sheridan Group



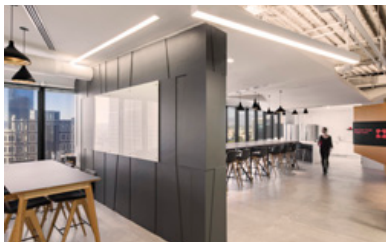
Maxus

Nominated by: HOK
ARC Engineering
Clune Construction Company
Maxus Global
T:S:P Project Management
Tangram



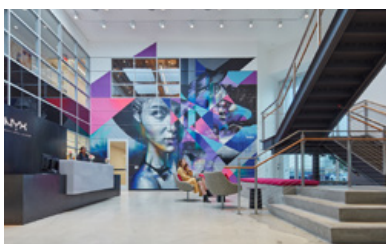
Moss Adams LLP

Nominated by: SAA
CBRE
Howard Building Corporation
KPFF Consulting Engineers
Moss Adams
PDA Engineering



NGKF

Nominated by: OKB Architecture
Artless Corporation
Associates Purchasing
Holwick Construction
Newmark Grubb Knight Frank



NYX Cosmetics Headquarters

Nominated by: Gensler, Los Angeles
Clune Construction Company
Gardiner & Theobald
NYX Cosmetics
Systems Source
Ware Malcomb



OncoSec Medical

Nominated by: McFarlane Architects, Inc.
Crawford & Company
Hope-Amundsen
McParlane & Associates
MPE Consulting



Receptos

Nominated by: DGA
DPR Construction
G/M Business Interiors
Hughes Marino
MPE Consulting
Southland Technology



Rocket Fuel

Nominated by: IA Interior Architects
B&G Millwork
Howard Building Corporation
Renegade Flooring



Smart Circle International

Nominated by: SAA
Glumac
Hahn Partners Inc.
Kaplan Gehring McCarroll Architectural Lighting
Ridge Landscape Architect



SmithGroupJJR

Nominated by: SmithGroupJJR
Interior Office Solutions
Light Art
Pivot Interiors
Shangri-La Construction
Tangram



SONOS

Nominated by: Shubin + Donaldson
Sierra Pacific Constructors
SONOS
Spec and Tek Engineering, Inc.
Stonemark Construction



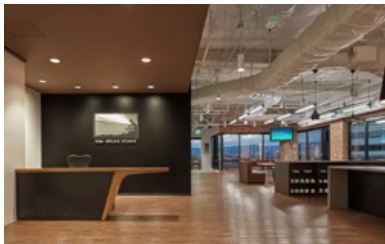
Spectrum 1

Nominated by: DGA
Architectural Film Design
DPR Construction
G/M Business Interiors
MPE Consulting
Reese Building Services



Technology Media Office

Nominated by: Shimoda Design Group
ARC Engineering
CBRE/Fanellipm
Gaia Development
Howard Building Corporation
Kaplan Gehring McCarroll Architectural Lighting



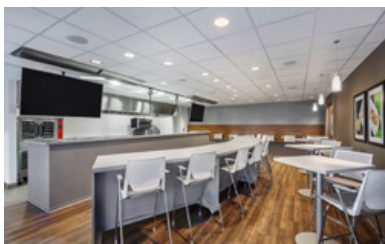
The Third Floor

Nominated by: Studio V
ARC Engineering
CBRE
Corporate Contractors, Inc.
Crosley Resources
The Third Floor



United Online

Nominated by: View
Cresa
Interior Office Solutions
Sierra Pacific Constructors
Syska Hennessy Group



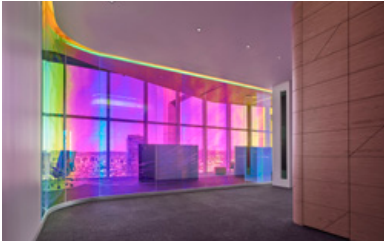
Ventura Foods Innovation Center

Nominated by: Environetics
Gingsberg
Howard Building Corporation
Interior Office Systems
Kane Consulting
Ventura Foods



White & Case LLP

Nominated by: HOK
Clune Construction Company
eSquared Lighting
OFG Incorporated
Pinnacle Incorporated
White & Case LLP



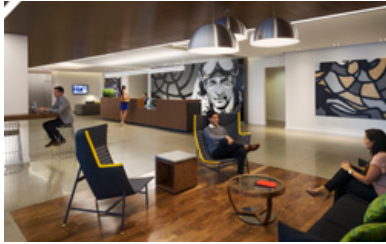
Worklife Center Los Angeles

Nominated by: Shimoda Design Group
ARC Engineering
Gaia Development
John Labib + Associates
Taslimi Construction



Alexandria Real Estate Equities

Nominated by: Gensler, San Diego
Alexandria Real Estate Equities, Inc.
Christopher Konecki
DPR Construction
Reese Building Services



The Bluffs

Nominated by: Unispace
Branded Arts
Koroseal Interior Products
Smart Furniture



Campus 2100

Nominated by: HLW International LLP
Howard Building Corporation
Marshall Property
Rockwood Capital



Gaumont

Nominated by: Environetics
3Form
Controlled Environments
Kam Kamran Designs
Shaw Contract Group
The Atlantic Group



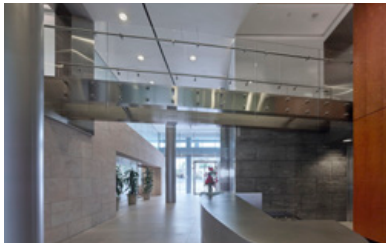
Interior Office Solutions

Nominated by: Felderman Keatinge + Associates
Anderson Audio Visual
DFS Flooring
Glumac
Interior Office Solutions
Taslmi Construction



JLL El Segundo

Nominated by: Wirt Design Group
Associates Purchasing
Glumac
JLL
Sierra Pacific Constructors



Mezzanine Bridge

Nominated by: Shimoda Design Group
Corporate Contractors, Inc.
John Labib + Associates
Rolex



Niman & Associates

Nominated by: Ware Malcomb
Mar Ventures, Inc.
Norm Wilson & Sons, Inc.
Tangram Studio



OFS Brands

Nominated by: Klawiter and Associates, Inc.
Cherry & Mandel
Interscape Construction
OFS Brands
PL-D
Rising Realty Partners



Opus Bank

Nominated by: Gensler, Newport Beach
Anderson Audio Video
Corporate Business Interiors
Turelk, Inc.



Tredway, Lumsdaine & Doyle, LLP

Nominated by: Kardent
Blu Eco Window Coverings
Construction Management Concept
Knoll
Shaw Contract Group
Tredway, Lumsdaine & Doyle, LLP