

CALIBRE

DESIGN AWARDS 2019

TEAM NOMINATIONS

WINNERS WILL BE ANNOUNCED
AT THE BEVERLY HILTON HOTEL
MAY 17, 2019

IIDA-SOCAL.ORG



Audeo K-5 Homeschool

Nominated by: Delawie
3Form
Altus Schools
BKM OfficeWorks
Davis and Adams Construction
MPA Architects



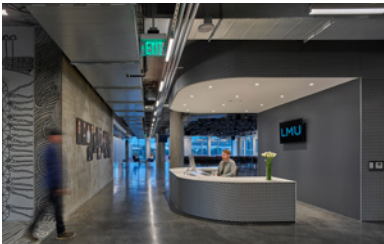
Caltech – The Ronald and Maxine Linde Hall of Mathematics and Physics

Nominated by: HOK
Hathaway Dinwiddie
HLB Lighting
Systems Source



Geffen Academy at UCLA

Nominated by: Koning Eizenberg Architecture
BNBuilders
Geffen Academy at UCLA
UCLA Capital Programs



Loyola Marymount University School of Film and Television

Nominated by: Skidmore, Owings & Merrill LLP
AMA Project Management
ARC Engineering
HLB Lighting Design
ITS Design Group
Warner Constructors



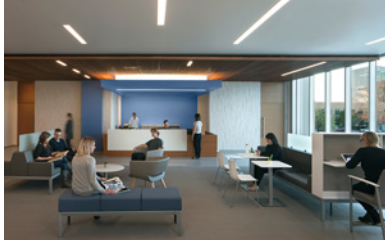
Tenochca Entry

Nominated by: Gensler
Innovative Commercial Environments
Konecki
LandLab
PCL Construction
San Diego State University



Hoag Hospital Irvine Emergency Department

Nominated by: Taylor Design
Corporate Business Interiors
Hoag Hospital Facilities
Nelson HPS



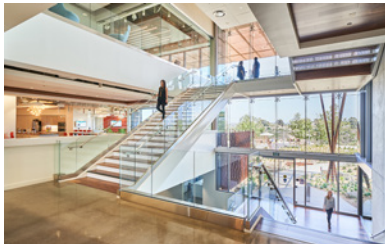
Koman Family Outpatient Pavilion, University of California, San Diego

Nominated by: CO Architects
Affiliated Engineers
KPFF Consulting Engineers
Rudolph & Sletten
Snipes-Dye Associates
Spurlock Landscape Architects



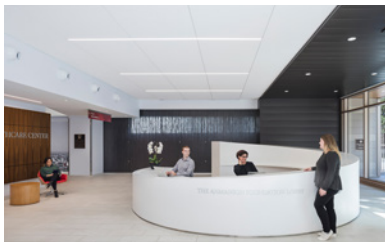
Schwartz Aesthetic Institute & Cosmetic Surgery Center

Nominated by: Abramson Teiger Architects
Designs of the Interior
LFA Lighting Design
Lusive
Rote Brothers Construction



Spectrum IV - Vertex Pharmaceuticals

Nominated by: DGA planning | architecture | interiors
Alexandria Real Estate Equities
BNBuilders
LPA
Project Management Advisors
Vertex Pharmaceuticals



USC Norris Healthcare Center

Nominated by: HKS
DPR Construction
IMEG Corp.
Keck Hospital
SCI Lighting Solutions
The Sheridan Group



Bavel

Nominated by: Studio UNLTD
Howard CDM
Kitchen Restaurant & Bar Specialists
Osvaldo Maiozzi
Steve Siegrist Design



Food and Beverage Venue at Confidential Biotech Workplace

Nominated by: NBBJ
Hathaway Dinwiddie
Limbach
Taft Electric
Veneklasen Associates
Vision Builders



Little Italy Food Hall

Nominated by: Gensler
CLTVT
Foodservice Design Group
Grain & Grit Collective
HG Fenton



Pomellato

Nominated by: Gruen Associates
Pomellato S.p.A.
Prudential Lighting Products
Shawmut Design and Construction
Southwest Sign Company
Tacchi Arredamenti



Vinz on Fairfax

Nominated by: Gensler
Alliance Residential Company
CBI
Orion Chandelier



Western Office

Nominated by: Gensler
Fanelli PM
Western Construct
Western Office
Taslimi Construction
tk1sc

PUBLIC & COMMUNITY SPACES



Banc of California Stadium

Nominated by: Gensler
First Circle Design
KPFF Consulting Engineers
M-E Engineers, Inc.
PCL Construction Services
Thornton Tomasetti



Bob Hope USO at LAX

Nominated by: Gensler
Bob Hope USO
Los Angeles World Airport (LAWA)
Meyers-Griffith Joint Venture
Tangram



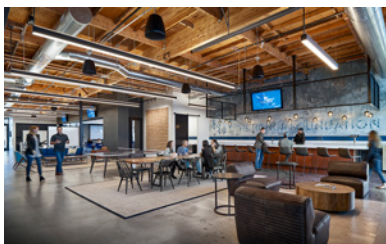
Convene, South Grand

Nominated by: HOK
ARC Engineering
eSquared Lighting
Gardiner & Theobald
Sierra Pacific Constructors



County of San Diego Sheriff's Crime Lab

Nominated by: SmithGroup
County of San Diego
DPR Construction
Lowe Enterprises
Project Management Advisors (PMA)



The Honor Foundation

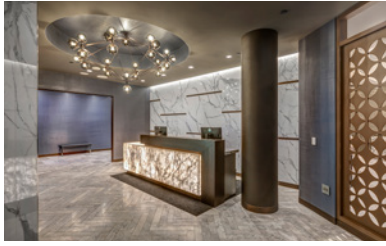
Nominated by: Gensler
Alexandria Real Estate
DPR Construction
The Honor Foundation
Populate Creative
Reese Building Services



North Beach Park

Nominated by: Patrick Tighe Architecture
Ahbe Landscape
City of Santa Monica
CS Legacy
Rec Republic

PUBLIC & COMMUNITY SPACES



United Polaris lounge

Nominated by: Solomon Cordwell Buenz
Bakergroup
Gwen Grossman Lighting Design
John A. Martin & Associates
Swinerton Builders
Syska Hennessy



USC Shoah Foundation

Nominated by: Belzberg Architects
BuroHappold
Clune Construction
The Maude Group
University of Southern California -
Capital Construction Development
USC Shoah Foundation -
The Institute for Visual History and Education





Behr Paint Company

Nominated by: H. Hendy Associates
Behr Paint Company
Colliers International
DPR Construction



Coty International

Nominated by: Alexis Dennis with Moshiri Associates
Haworth
JLL
Sierra Pacific Constructors
Tarkett



Google, Spruce Goose

Nominated by: ZGF
Arup
CBRE
Google
Matt Construction
SPMD



MDR Truss Campus

Nominated by: Rapt Studio
EPT Design
KPFF
RPM
Structural Focus
Tarantino Construction



Mission Federal Credit Union

Nominated by: ID Studios
G/M Business Interiors
Level 10 Construction
Mission Federal Credit Union



Netflix CUE

Nominated by: Gensler
ARC Engineering
Howard Building Corporation
ITS Design Group
Newson Brown Acoustics
Oculus Light Studio



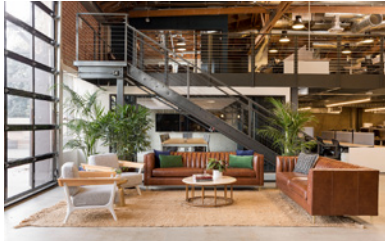
Scorpion Internet Marketing

Nominated by: Wirt Design Group
Brandow & Johnston
Cresa
Interior Office Solutions
Scorpion Internet Marketing
Snyder Langston



Viacom Hollywood

Nominated by: Rottet Studio
Englekirk
Howard Building Corporation
Rountree Glass
Sean O'Connor Lighting
Veneklasen Associates



Dollar Shave Club

Nominated by: Rapt Studio
ARC Engineering
Howard Building Corporation
MASHstudios



Easterseals Southern California

Nominated by: H. Hendy Associates
CBI
Easterseals
Graffiti
JLC Associates
Moen Woodworks



Entertainment Network: Digital Consumer Group

Nominated by: Klawiter and Associates
Bentley Mills
Corporate Contractors
L&K Engineering
Light Build Design
Unisource Solutions



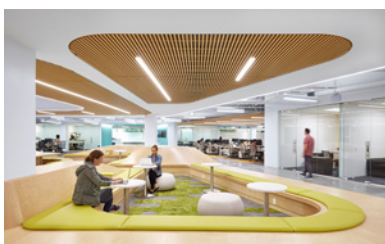
FX Networks

Nominated by: Beckson Design Associates
Fox Networks Engineering and Operations
Newson Brown Acoustics
Taslmi Construction
Unisource Solutions



Henkel Culver City

Nominated by: Ware Malcomb
Cibola Systems
SAW & Associates
Sean O'Connor Lighting
Sierra Pacific Constructors
Tangram



Incipio Technologies

Nominated by: CannonDesign
gkkworks Construction Services
Incipio Technologies
LBA Realty





Paradigm Talent Agency

Nominated by: Rottet Studio
ARC Engineering
Clune Construction Company
eSquared Lighting Design
Newson Acoustics
Thornton Tomasetti



STARZ

Nominated by: HLW International
AMA Project Management
ARC Engineering
Oculus Light Studio
Taslimi Construction
Western Office



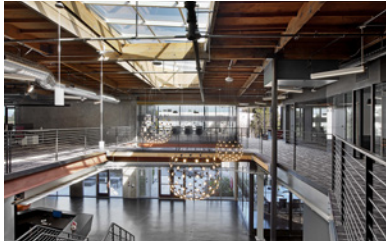
Wasserman Media Group

Nominated by: Gensler
ARC Engineering
JDM Contractors
Knoll
Systems Source
Wasserman Media Group



ZEFR

Nominated by: Rapt Studio
Neptune Glassworks
Pair
Settlers LA



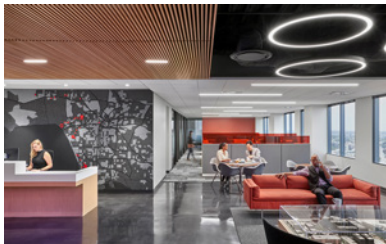
8i

Nominated by: Felderman Keatinge + Associates
Cresa
dTank
Howard Building Corporation
Interior Office Solutions
L & K



Architectural Firm Los Angeles

Nominated by: HGA
Clune Construction Company
Herman Miller
Pivot Interiors



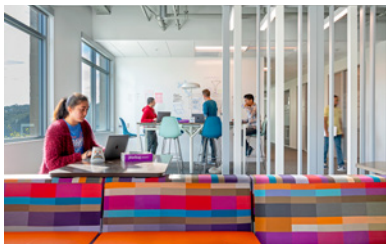
Cedars-Sinai, Wilshire Blvd.

Nominated by: ZGF
Cedars-Sinai
iFactor
John A. Martin & Associates
KGM Architectural Lighting
TIS Construction Services



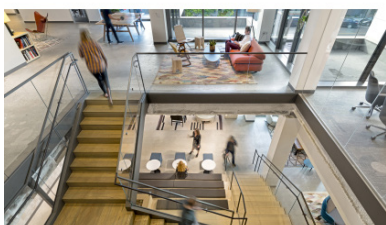
Convene, S. Figueroa

Nominated by: Gensler
Gardiner & Theobald
IOS – Interior Office Solutions / PeopleSpace
Sierra Pacific Constructors
TM Technology Partners
WRAPPED



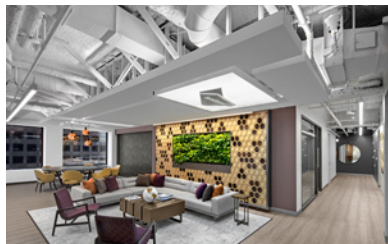
GreatCall

Nominated by: Hollander Design Group
Cushman Wakefield
G/M Business Interiors
GreatCall



Imagine Entertainment

Nominated by: Rios Clementi Hale Studios
Kaplan Gehring McCarroll
Tangram
Taslimi Construction
William Koh and Associates



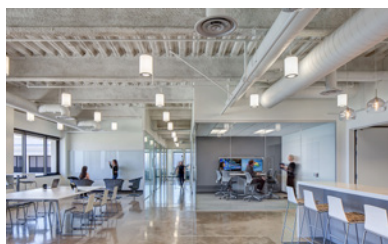
LendLease LA

Nominated by: HOK
Art Crafters Cabinets Incorporated
Corporate Contractors
Lendlease Corporation
Nancy Zinzell Steinman Interior Design
Systems Source



Miramax

Nominated by: AECOM
EEi
Environmental Contracting Corporation
Miramax
Western Office



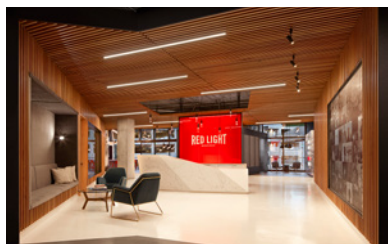
Pacific Global Asset Management (PGAM)

Nominated by: H. Hendy Associates
Howard Building Corporation
Howe Bonney & Associates
Irvine Company Office Properties
Pacific Life Insurance
Tangram



Procore

Nominated by: HLW International
AMA Consulting Engineers
Black LTD
Clune Construction Company
Seeley Brothers
Tangram



Red Light Management

Nominated by: OKB Architecture
AMA Consulting Engineers
Corporate Contractors
IDS Real Estate
Newmark Knight Frank
The Sheridan Group



Sunstone Hotel Investors

Nominated by: Gensler
Howard Building Corporation
KGM
Seeley Brothers
Sunstone Hotel Investors
Tangram



Symantec

Nominated by: IA Interior Architects
Howard Building Corporation



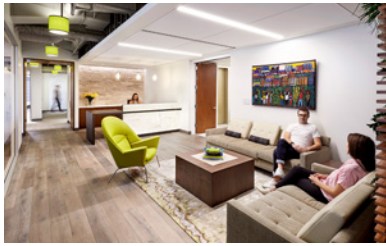
Vedder Price

Nominated by: Unispace
Bentley Mills
CJTSS
FA International Stone
Graphic Installations
Seeley Bros.



Workshop Creative

Nominated by: HLW International
All Ways Electric
Gardiner & Theobald
IDG Structural Engineering
Newmark Grubb Knight Frank
Steiner Construction



California Wellness Foundation

Nominated by: Wolcott Architecture
ARC Engineering
Argento/Graham
Clune Construction Company
Enter Environments
Tangram



Confidential Investment Bank

Nominated by: TPG Architecture
Taslimi Construction



Consumer Attorneys Association of Los Angeles

Nominated by: OKB Architecture
Cannon Constructors
Lam & Kaainoni Engineering
Newmark Knight Frank
SCI Lighting Solutions
The Sheridan Group



CV Sciences

Nominated by: Hollander Design Group
CV Sciences
Innovative Commercial Environments
Lockrul Construction



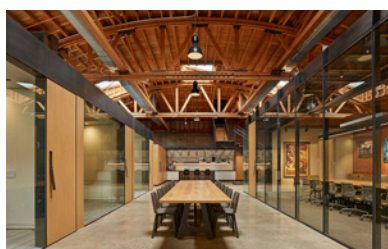
Innovative Commercial Environments

Nominated by: Ware Malcomb
Burger Construction
Hughes Marino
ICE
TekWorks



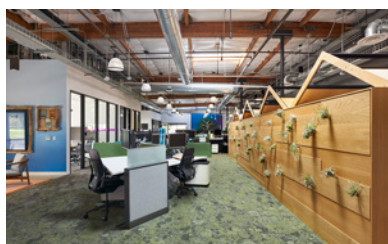
Irongate Office

Nominated by: KUSKIN / MAY
Artcrafters Cabinets, Inc.
CBRE
Irongate
Sean O'Connor Lighting
Taslimi Construction



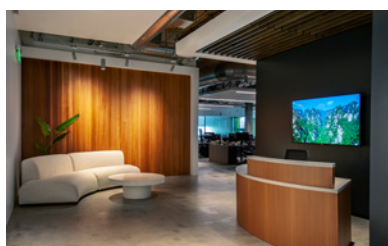
John Wells Productions

Nominated by: ShubinDonaldson
AMA Consulting Engineers
John Labib + Associates
Oculus Light Studio
Sierra Pacific Constructors



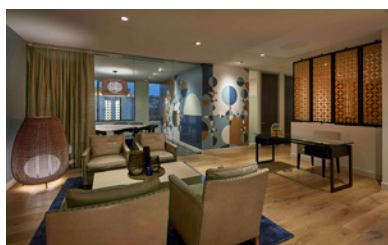
LinkedIn Carpentaria, Building 1

Nominated by: HOK
AMA Consulting Engineers
Insight Structural Engineers
JLL
Pivot Interiors
Sierra Pacific Constructors



MullenLowe

Nominated by: Signature-Design
Dekora Concepts
R1D



Ryan Seacrest Productions

Nominated by: NxT studio
Western Office



T2 Hospitality

Nominated by: Gensler
Anderson Audio Visual
Kaplan Gehring McCarroll Architectural Lighting
KPFF Consulting Engineers
T2 Development
Turelk



The Trade Desk

Nominated by: HOK
Cresa
David Simpson Construction
Tangram

WORK EXTRA SMALL



OFG LA Showroom

Nominated by: NxT studio
OFG
LE Waters Construction
Light Art



SoCal Gas MPK Testing Center

Nominated by: Kamus + Keller Interiors | Architecture
SCI Lighting Solutions
Sign-All | Architectural Signage
Southern California Gas Company
Tangram
Thomco Construction