



JULY 23rd

IIDA-SOCAL.ORG

**IIDA**  
SOUTHERN CALIFORNIA  
chapter

# INLAND EMPIRE DESIGN TOUR THE FRONTIER PROJECT

## INLAND EMPIRE DESIGN TOUR

Tuesday, July 23rd 2019  
5:30 – 7:30pm

### LOCATION

The Frontier Project | CVWD  
10435 Ashford Street, Rancho Cucamonga,  
CA 91730

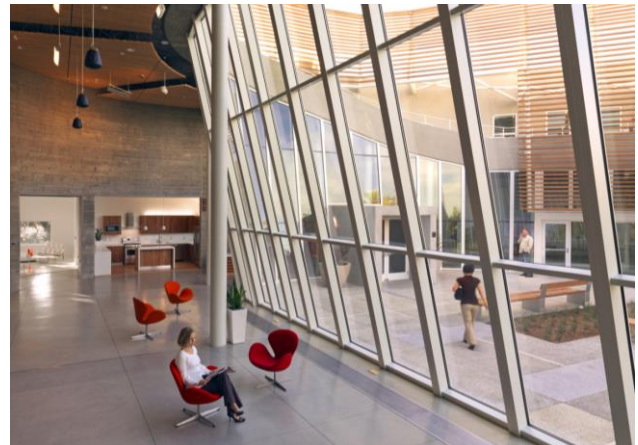
Completed by HMC Architects & Turner  
Construction

### INFO

Light snacks + beverages

### PARKING

Self parking, refer to map for parking.



### TICKETS

**RSVP required**  
**Free for Members + Students**

\$10 - Non-Member Students  
\$20 - Non-Members  
\$30 – Attendees day of without registration

Please RSVP at [iida-socal.org](http://iida-socal.org)

### 2019 CHAPTER SPONSORS

**PATRON** BENTLEY™ Mohawk Group tangram. **Taslimi** CONSTRUCTION

**DONOR** arper HermanMiller | GEIGER HBC LIGHTBUILDDSIGN  
PIVOT SPC Steelcase Tarkett teknion

**FRIEND** arcadia | Encore CROSSVILLE. ELEVATE YOUR SPACE. Emser Tile FIANDRE | E-W  
Garrett HAWORTH® Knoll Metropolitan West. peerhatch  
Milliken © F S shaw contract®

**DESIGN PARTNER** AECOM Gensler IIRK WOLCOTT

### EVENT SPONSORS

daltile®  
shaw contract®