



## 2021 Calibre Design Awards - Nominated Projects

### EDUCATION



#### **California Institute of Technology Chen Neuroscience Research Building**

Nominated by: SmithGroup  
Affiliated Engineers  
Hensel Phelps  
Saiful Bouquet



#### **Cal Poly Pomona Student Housing**

Nominated by: HMC Architects  
Bapko Metal, Inc.  
Geometrik Manufacturing, Inc.  
Sundt Construction  
Tarkett



#### **Icon Collective**

Nominated by: IA Interior Architects  
Catalyst Office  
Kaufmann and Associates  
LA Sound Panels



#### **UCLA Anderson School of Management**

Nominated by: Gensler  
PCL Construction  
Steelcase  
Tangram  
Waveguide

## EVOLVING ADAPTATIONS



### **Gardenhouse**

Nominated by: Rottet Studio

Gruen Associates

DCH Builders, Inc.

MAD Architects

Palisades Capital Partners LLC

The Agency



### **Swinerton Santa Ana / Orange County**

Nominated by: Shimoda Design Group

Creative Space

Grimm & Chen

Steelcase

Tangram



### **Workplace as Laboratory – A Case Study at Our Los Angeles Headquarters**

Nominated by: RIOS

Aaron Kai - Mural Artist

Big Ass Fans

Control Air Enterprises

Harold Jones

Reaume Richardson

## HEALTH & WELLNESS



### **Cedars-Sinai Biomanufacturing Center (CBC)**

Nominated by: HDR Architecture  
AEI Engineers  
Pivot Interiors  
R&S Construction



### **Cedars-Sinai MAST Program**

Nominated by: HDR Architecture  
AEI Engineers  
MDC Wallcovering  
Pivot Interiors  
R&S Construction



### **Dr. Barbara Sturm, Los Angeles**

Nominated by: HUXHUX Design  
F-AD  
Ferrante Koberling  
Francis Krahe Associates  
Gruen Associates  
Taylor Syfan



### **Fudge Family Birthing Suites - Hoag Hospital Irvine**

Nominated by: Taylor Design  
KPFF  
MR Walls  
Nelson HPS  
Rabben/Herman Design  
tk1sc



### **Lawrence J. Ellison Institute for Transformative Medicine of USC**

Nominated by: RIOS  
CRB  
Oculus Light Studio  
Sierra Pacific Builders  
Systems Source



### **Metagenics Personalized Lifestyle Medical Clinic (PLMC)**

Nominated by: H. Hendy Associates  
PeopleSpace  
PLP SoCal  
tk1sc  
Turelk

## HEALTH & WELLNESS



### **RUHS Medical and Surgical Center**

Nominated by: Ware Malcomb

KPFF Consulting Engineers

Millie and Severson

tk1sc

Trammell Crow



### **The Samuel Oschin Cancer Center at Cedars-Sinai**

Nominated by: HGA

ARUP

Degenkolb Engineers

Hathaway Dinwiddie Construction Company

## HOSPITALITY



### **Interstellar**

Nominated by: Omgivning  
Base Collaborative  
Global Construction Services, Inc.  
Nous Engineering  
Play Space Grnd  
Russell Holland Engineering



### **Liberation Coffee House**

Nominated by: ORA  
Brisas Drapery  
Pacific Office Interiors  
Swinerton

## ON THE BOARDS



### **Alteryx**

Nominated by: Wolcott Architecture  
ARUP  
Gardiner & Theobald Inc.  
KPRS Construction Services  
Newson Brown Acoustics  
The Sheridan Group



### **BEN - Brand Entertainment Network Los Angeles**

Nominated by: NxT studio  
California Lighting Sales  
JTM Construction Group Inc.  
OFG Inc.  
Pinnacle Inc.  
Simon S. Wong & Associates



### **BMG Music Los Angeles**

Nominated by: NxT studio  
Alfatech  
California Lighting Sales  
Howard Building Corporation  
Watchdog



### **Collage Culinary Experience**

Nominated by: IA Interior Architects  
Coffman Engineers, Inc.  
GMEP Engineers  
Servco Builder



### **FivePoint Plaza Level**

Nominated by: Gensler  
Englekirk Structural Engineers  
KGM Lighting  
KPRS  
tk1sc

## ON THE BOARDS



### **McCarthy Building Companies**

Nominated by: Gensler  
ARC Engineering  
Steelcase  
Tangram



### **Museum for the Heart**

Nominated by: OFFICEUNTITLED  
Clune Construction Company  
Leviathan  
LPA  
Plannet  
Sound Image

## PUBLIC & COMMUNITY SPACES



### **Biomed Realty Building Entry and Common Area**

Nominated by: ID Studios, Inc.

GMBI

Swinerton



### **Los Angeles Union Station Passenger Concourse Expansion and Renovation**

Nominated by: Architectural Resources Group

Los Angeles Metropolitan Transportation Authority (Metro)

Morlin Asset Management, LP

Muir-Chase Plumbing Co.

Structural Focus

Swinerton



### **Watt Plaza Lobby Renovation & Expansion**

Nominated by: STUDIOS Architecture

Alfa Tech, Inc.

Brandow & Johnston Associates

Clune Construction Company

Hiram Banks Lighting Design

Saw & Associates



## WORK SMALL



### 500 Brand

Nominated by: Wolcott Architecture  
Erkel Greenfield and Associates  
Granite Properties  
Interscape Construction  
Office Furniture Group



### Doctor Multimedia

Nominated by: SmithGroup  
Backs Construction  
Harmon + Wayne Engineering  
Hughes Marino  
Think Office Interiors



### International Post-Production Studio

Nominated by: NxT studio  
California Lighting Sales  
Parker Brown Inc.  
Simon S. Wong & Associates  
Valencia Technical Consulting  
Watchdog



### Kettner & Ash

Nominated by: Gensler  
Dvico West  
LDG Landscape  
Ocean West  
Standard Vision



### Preston Ventures

Nominated by: D Space Interiors  
Brookhollow  
DBaC Inc.  
Systems Source

## WORK SMALL



### **Spencer Stuart LA**

Nominated by: Perkins&Will  
HITT Construction  
Watchdog



### **Topa Equities**

Nominated by: Gensler  
KGM Architectural Lighting  
Swinerton  
Western Office  
WM Group West Engineers

## WORK MEDIUM



### **Barnes & Thornburg San Diego**

Nominated by: Gensler  
H+W Engineering  
Martin & Libby Engineers



### **Branded Online**

Nominated by: H. Hendy Associates  
Brandow & Johnston  
Crows Perspective  
Savills  
tk1sc  
Turelk



### **CIGA**

Nominated by: Wolcott Architecture  
ALTA  
CBRE  
Office Furniture Group  
Syska Hennesy



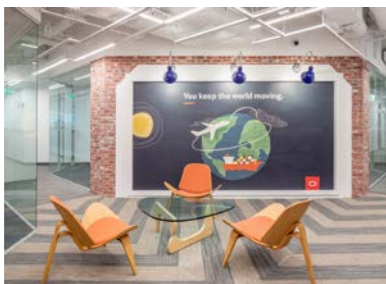
### **Fish & Richardson**

Nominated by: ID Studios, Inc.  
Hughes Marino  
Pacific Building Group  
Systems Source



### **J2 Global**

Nominated by: Wolcott Architecture  
AMA Consulting Engineers  
AM Cabinets  
California Lighting Sales  
Pinnacle Contracting Corp.  
Tangram Interiors



### **Oracle, 2425 Olympic Boulevard**

Nominated by: AECOM  
ARC Engineering  
Bang Mac  
Taslmi Construction

## WORK MEDIUM



### ORCI

Nominated by: Struere  
Building Solutions Group - MEP Engineers  
GCX LLC  
Watchdog



### Swinerton Office Downtown LA

Nominated by: Shimoda Design Group  
Tangram  
Steelcase



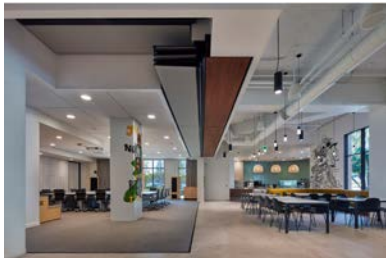
### Team Solomid – TSM Performance Center

Nominated by: NxT Studio  
JTM Construction Group  
RTM Engineering  
Cresa Los Angeles  
California Lighting Sales



### Traffik

Nominated by: LPA Design Studios  
Bogart Construction  
tk1sc  
The Irvine Company



### Universal Music Group

Nominated by: OKB  
Corporate Contractors, Inc.  
Krislyn Design  
Western Office  
ARC Engineering

## WORK LARGE



### **CommonGrounds Workplace**

Nominated by: Ware Malcomb

Arc Engineering  
Clune Construction  
CS Illumination Inc.  
Cushman & Wakefield



### **Confidential Law Firm**

Nominated by: Gensler

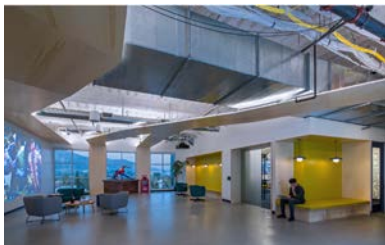
ARC Engineering  
AWC Architectural Woodworking Company  
PeopleSpace  
Taslimi Construction  
VVA Project & Cost Managers



### **FivePoint Corporate Office**

Nominated by: Gensler

KPRS  
Pivot Interiors  
Taber Co.  
tk1sc



### **Insomniac Games**

Nominated by: OKB

AMA Consulting Engineers  
Environmental Contracting Corp.  
Savills  
Studio Other  
Western Office



### **Rancho Los Amigos National Rehabilitation Center Support Services Building**

Nominated by: Taylor Design

Department of Public Works, LA County  
Interface  
Kemp Bros. Construction, Inc.  
Los Angeles County Dept. of Health Services  
TTG-IMEG Corp.

## WORK EXTRA LARGE



**Confidential Client**  
Nominated by: ZGF  
DPR Construction  
Infrastructure Factor  
Tangram Interiors



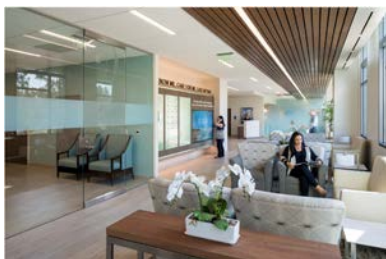
**Confidential Law Firm**  
Nominated by: Gensler  
ARC Engineering  
PeopleSpace  
The Sheridan Group  
Taslimi Construction  
VVA Project & Cost Managers



**Epson**  
Nominated by: Wolcott Architecture  
Adams CM  
Howard Building Corporation  
Pivot Interiors  
Taber  
tk1sc



**GoodRx Headquarters**  
Nominated by: RIOS  
AMA  
Clune Construction  
Holmes Structures



**Providence St. Joseph Health Mission Hospital Leonard Cancer Institute**  
Nominated by: HKS Architects, Inc.  
EXP  
Miyamoto International Inc.  
Montanio Design Group  
Snyder Langston



**Rutan & Tucker**  
Nominated by: Gensler  
Cushman Wakefield  
HBC  
PeopleSpace  
Systems Source  
Trammell Crow

## WORK EXTRA LARGE



### **Saatchi & Saatchi Los Angeles Office**

Nominated by: Blitz  
ARC Engineering  
CRESA  
Degenkolb Engineers  
Fortyseven, LLC  
HLB



### **TikTok**

Nominated by: Gensler  
Architecture & Light  
Bytedance  
Saiful Bouquet Structural Engineers  
Swinerton  
Western Allied