

2024 36

36th | **CALIBRE**
Annual | Design Awards

NOMINEES

Winners will be announced at the Gala Event
Beverly Wilshire Hotel
May 3, 2024

[Click here](#) for tickets and event details



Del Oro High School

Nominated by: HMC Architects
Hohbach-Lewin
TK1SC
RIOS
Ruzika Company, INC.
S.C. Anderson, Inc.



University of California | Irvine College of Health Sciences and School of Nursing

Nominated by: HED
The S/L/A/M Collaborative
Pickett Design Associates
Hathaway Dinwiddie Construction Company
Saiful Bouquet
Alvine Engineering



Wonderful Career Center

Nominated by: AECOM
Migcom
Klassen & Smith
PLP SoCal
The Wonderful Company



Cedars-Sinai Mink Radiologic Imaging- Marina

Nominated by: Abramson Architects
Cedars-Sinai Health System
TIS Construction Services
REX Engineering
Vince Tarango
Pivot Interiors



Clover Dental

Nominated by: Studio Murnane
JS & Associates
Burkhart Dental Supply
Clover Orthodontic Studio



Kaiser Permanente Watts Medical Offices and Counseling and Learning Center

Nominated by: Perkins & Will
Kaiser Permanente
Kevin Barry Art Advisory
Systems Source
HLB Lighting
Swinerton



Pearl Mini IVF Clinic

Nominated by: Ware Malcomb
Align Builders
Bandak Project Management
H+W



UCLA Encino Medical Facility

Nominated by: KARDENT
SWA Architects
CONAM Building Co
ARTWORKS
Tangram Interiors



UCLA Health Barbara Kort Women's Imaging Center

Nominated by: KARDENT
SWA Architects
CONAM Building Co
Tangram Interiors
Tahiti Cabinets
ARTWORKS



ATLA Venice

Nominated by: Loescher Meachem Architects
Taller ADG
Holmes
Clay Enterprises



Avatar Coffee Roasters

Nominated by: Hendy
Details Custom Builders, Inc.
Catalyst Retail
Plantscapers



Caló Kitchen + Tequila

Nominated by: VANROOY design
Calo Kitchen and Tequila
T.S. Voelker Architecture
Coastal Pacific Construction, Inc.
Moen Millworks, Inc.
Modern Building Team



Shore House at The Del, Curio Collection by Hilton

Nominated by: LEO A DALY
Blackstone
The Carroll Adams Group
Swinerton



The Hadsten Solvang, Tapestry Collection by Hilton

Nominated by: HBG Design
Chavez-Grieves
I.C. Thomasson
Rick Engineering
Fred Schmid & Associates
Halsell Builders



Tribù Flagship Showroom

Nominated by: NCA Studio, Inc.
Oceanparkstudio
Marc Merckx Interiors
Gomringer Kuhl Builders
Beverly Gemini Investments
MEP California Engineering Corp



Bloom South Coast

Nominated by: Mannigan Design, Inc.
Legacy Partners
TCA Architects
Johnstone Moyer, Inc.
PCW Millworks



Chroma

Nominated by: Vida Design
Fairfield
Parade
Tube Art
Astek



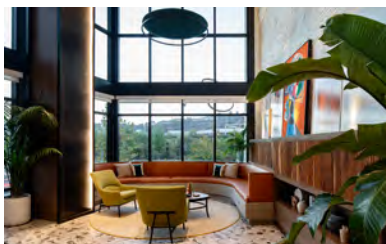
Halcyon House

Nominated by: Hendy
Quarterra
KTGY
MJS Landscape Architecture
Corporate Business Interiors



Santal Thousand Oaks

Nominated by: CDC Designs
RCI General Contractors
KTGY
BMLA Landscape Architects
The Latigo Group



The Society - Ruby

Nominated by: Vida Design
Holland Partner Group
ABG Art Group
HBB
Sanwood Fine Carpentry & Construction, Inc.



Union Grantville

Nominated by: Gensler
GroundLevel Landscape Architecture, Inc.
Greystar
Van Tilburg, Banvard, & Soderbergh
Carol Braslow



CenterPark Amenities Building

Nominated by: HGA
Ferguson Pape Baldwin Architects
Coffman Engineers
H+W Engineering
Spurlock Landscape Architects
bkm Officeworks



Confidential Client Lobby and Event Space

Nominated by: Klawiter and Associates
Hathaway Dinwiddie Construction Co
Longman Lindsey Acoustical Consultants
Teklogic
Taber Co
Wall Panel Systems Co



Cedars Sinai Board of Governors Innovation Center

Nominated by: HDR Architecture
Rudolph and Sletten
Sheridan Group
Skyline Design



Confidential Tech Client, Immersive Hospitality & Events Spaces

Nominated by: ZGF
Swinerton
SPMD
One Hat One Hand
Unisource Solutions
FMS



Los Angeles Design Center

Nominated by: Parco Studio
GCX
Hughes Marino
KTA Engineering
Pivot Interiors



Marlin Equity

Nominated by: Gensler
Marlin Equity Partners
Coyle Construction
KGM Architectural Lighting
DCI Engineers
Place Landscape



Navy SEAL Foundation

Nominated by: Gensler
Navy SEAL Foundation
Virginia High Performance
DPR Construction
MA Engineers Inc.



NeueHouse Venice Beach

Nominated by: Loescher Meachem Architects
DesignAgency
J.T. Magen Construction Group
NeueHouse



Terasaki Institute Erwin Building, Terasaki Institute for Biomedical Innovation

Nominated by: CO Architects
Terasaki Institute for Biomedical Innovation
P2S, Inc.
MATT Construction
KPF Consulting Engineers



Tricon Residential

Nominated by: ShubinDonaldson
Sierra Pacific Constructors
DEB Construction, LLC
Studio Other
TK1SC
JLL



Albert Einstein Academy Charter High School

Nominated by: DLR Group
San Diego Unified School District
Visual Asylum
Groundlevel
MA Engineers
Johnson Consulting Engineers



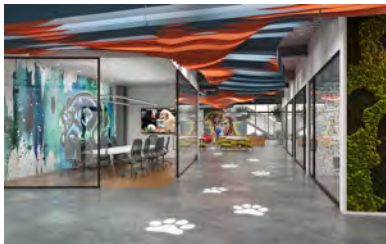
Allensworth Passage

Nominated by: SmithGroup



Century City Cultural Pavilion

Nominated by: Gensler
KPF Consulting Engineers
Newson Brown Acoustics LLC
PlanNet
Oculus Light Studio
Mark Tessier Landscape Architecture



Company Confidential

Nominated by: O Arch, Inc.
Lincoln Property Company
Engineered Spaces, Inc.
Office Furniture Group



Long Beach City College - Campus Center

Nominated by: HPI Architecture
Long Beach City College
MHP Structural Engineers
P2S Inc.
Ridge Landscape Architects



Magnolia Public Charter School

Nominated by: DLR Group
Magnolia Public School
Lynn Capouya, Inc.
Erickson Hall
VCA Engineers



Mt. San Antonio College - Technology and Health Replacement Building

Nominated by: HPI Architecture
Mt. San Antonio Community College District
Sim Health Group
MHP Structural Engineers
HERA Laboratory Planners



Orange County Sanitation District New Headquarters Building

Nominated by: HDR Architecture
Swinerton
Waveguide
PeopleSpace



Petco Park Agave Club and Lounge

Nominated by: Gensler
San Diego Padres
Henderson Engineering
Thornton Tomasetti
Ashley Donahue Design



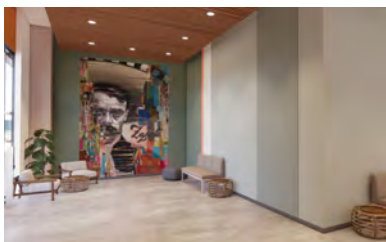
Redlands Residences

Nominated by: DLR Group
UCR Group LLC
Christiansen & Company
LandArq, Inc.
GOUVIS Engineering
Williams Sonoma, Inc.



Rosemead Transition School

Nominated by: DLR Group
El Monte Union High School District
DCGA Engineers
Silverbar Studio
SWS Engineers, Inc.
Pacific Fire Engineering



UC San Diego, Ridge Walk North Living and Learning Neighborhood

Nominated by: HMC Architects
Hensel Phelps
EYRC
SWA
DCI
MA Engineers



DSV Global Transport and Logistics

Nominated by: Ware Malcomb
Turek, Inc.
HSA & Associates, Inc.
AlfaTech



Dine Brands

Nominated by: Gensler
Dine Brands
Sierra Pacific Constructors
Systems Source
SAW & Associates
ARC Engineering



Supernal, Laguna Canyon

Nominated by: RMW
HITT Contracting
One Workplace
Habitat Horticulture
O+A



Tandem Diabetes Headquarters

Nominated by: ID Studios, Inc.
Burger Construction
CBRE
GIM Business Interiors
Shaw Contract
MillerKnoll



9000 Wilshire

Nominated by: HLW
Neil Denari Architects
Skanska USA Commercial Development / Skanska USA Building
Argento/Graham
Saiful Bouquet
Glumac Structural



Affordable Housing Developer

Nominated by: MUL-MAC
Ram Construction
Tangram Interiors
DPPM Project Management



Armata Pharmaceuticals

Nominated by: Worksmart Design
AES Clean
Friant
L&K



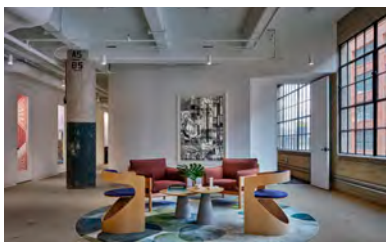
Biolabs Tenant Improvement

Nominated by: McFarlane Architects
Biolabs
JB Pacific
Milliken
Cultura



Boldyn Networks

Nominated by: O Arch, Inc.
Boldyn Networks
The Irvine Company
WSP
Pacific Tusk Builders
Office Furniture Group



Confidential Arts District Firm

Nominated by: HOK
HITT Contracting
Henderson Engineers
Tangram Interiors
Tre Borden & Co.
SCI Lighting



Confidential Client

Nominated by: HLW
JT Magen
G+T
AMA Group
Spark Studio Lighting Design LLC
Office Furniture Group



Confidential Financial Client Los Angeles Office Renovation

Nominated by: Corgan
Confidential Financial Client
Clune Construction
Turner and Townsend
Turf Design
Jean Summer and Associates



Hartbeat LA

Nominated by: Studio 7 Design Group
HITT Contracting
Hartbeat
BAM Creative
Tangram Interiors
AMA Group



Illumina Executive Briefing Center

Nominated by: ZGF
BNB Builders
Illumina
Hyperquake



Nossaman LLP, Downtown Los Angeles

Nominated by: SmithGroup
HYL Architects
AMA Group
NOSSAMAN LLP
Howard Building Corporation
Bluespace Interiors



Omaze

Nominated by: Revel Architecture & Design
ECC
ARC Engineering
Insight Structural Engineers
Steelcase
Cushman Wakefield



Tri Pointe Homes

Nominated by: Gensler
Tri Pointe Homes Inc.
Howard Building Corporation
Systems Source
KGM Architectural Lighting



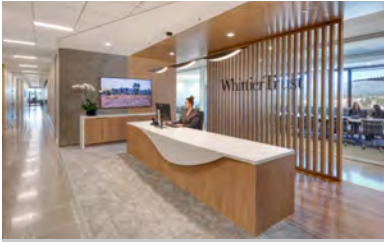
United Talent Agency Bungalows

Nominated by: RIOS
ARC Engineering
The Lighting Practice
SAW & Associates
JDM
MASHstudios



Universal Music Publishing Group

Nominated by: Gensler
Oculus Light Studio
Mark Tessier — Landscape Architecture Inc
Newson Brown Acoustics, LLC
Sheridan Group
Corporate Contractors, Inc.



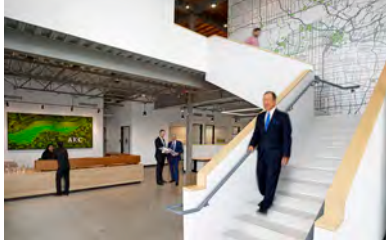
Whittier Trust

Nominated by: Wolcott Architecture
Lincoln Property Company
Ram Construction
GMBI



AEW

Nominated by: Wolcott Architecture
Pinnacle Construction
The Sheridan Group
Tangram + Studio Other



ARC Engineering

Nominated by: MOZU Architects
ARC Engineering
ECC
Structural Focus
Pinnacle, Inc.



Alexandria Project

Nominated by: Wolcott Architecture
GCX
Taber Co
Pinnacle Communications Services
SoCal Stone
DFS Flooring



Design Firm in Tustin

Nominated by: Taylor Design
MUL-MAC
Servco Construction
Corporate Business Interiors
Allsteel



Edwards Lifesciences Building D State-of-the-Art Auditorium

Nominated by: Gensler
Edwards Lifesciences
PRJX
Clune Construction
Sound Image
PlanNet



Financial Offices

Nominated by: RIOS
Del Amo Construction
EEi
ARC Engineering
Syska Hennessy Group
Uhuru Design



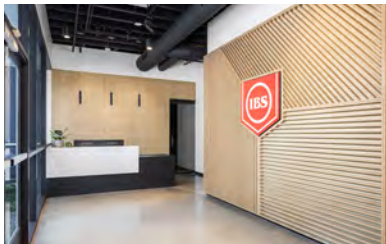
Hines West Edge LA

Nominated by: Rapt Studio
Seeley Brothers
HITT Contracting
Hines
Studio Other
Sheridan Group



Hologic Innovation Center

Nominated by: AVRP Studios
Geologic
Pacific Building Group
H+W Engineering
Prime Structural Engineers
Ickler Electric



IBS Electronics

Nominated by: ONE NINE Architecture
ONE Maple
PCW Millworks
Cal Coast Flooring



Interior Design Studio

Nominated by: IA Interior Architects
Swinerton
Bask
TK1SC
Plannet



Jacques Marie Mage

Nominated by: Studio Murnane
Makim Architecture
JSA
Warner Constructors



McKinsey & Company

Nominated by: HLW
GCX
VVA LLC
JLL
AMA Group
CD+M Lighting Design Group, LLC



Office of the Future

Nominated by: Gensler
Tectonics
ARC Engineering
Tangram + Studio Other
Western Office



Pacific Companies

Nominated by: HENDY
Pacific Tusk Builders
Tangram Interiors
Terra Mai
Graffiti
HVAC Mechanical



Poms & Associates

Nominated by: Studio Blitz
GCX
Tangram Interiors
Living Art Aquarium
Studio Other
AMA Group



REVERIE

Nominated by: DGA
bkm Officeworks
Bycor
Shaw Contract
SDLA



Shamrock Capital

Nominated by: ShubinDonaldson
Sierra Pacific Constructors
ARC Engineering
Studio Other
AM Cabinets Inc.



The Resmark Companies

Nominated by: Gensler
Oculus Light Studio
Howard Building Corporation
AMA Group
Western Office



Wienerschnitzel HQ

Nominated by: O Arch, Inc.
Galardi Group Inc.
Lincoln Property Company
Engineered Spaces, Inc.
Details Custom Builders, Inc.
Source Creative Office Interiors



Zuru

Nominated by: Worksmart Design
Shaw Contract
Interface, Inc.
Walters
Interface