

38th | **CALIBRE**
Annual | Design Awards

NOMINEES

Winners will be announced at the Gala Event
InterContinental Los Angeles
May 21, 2026

[Click here](#) for tickets and event details



Compton High School

Nominated by: DLR Group
Compton Unified School District
Cumming Group
Pulling Paint Murals
Swinerton



RCOE Conference Center & Gaming Arena

Nominated by: DLR Group
Corian Surfaces
Erickson Hall Construction
Interface
Riverside County of Education
Shaw Contract
Terramai



Saddleback @ ATEP

Nominated by: Gensler
P2S
Saiful Bouquet
South Orange County Community College District
Swinerton
Webb Food Service Design



City of Hope Orange County Cancer Specialty Hospital

Nominated by: HOK
AEI
Altitude Design Office
City of Hope
Colin Gordon Associates
Hensel Phelps
HLB
Modern Art Services



SAC Health Brier Campus MOB

Nominated by: Perkins&Will
BNBuilders
Gafcon
KPF
SAC Health
SCI Lighting Solutions
Systems Source
WSP



UCI Health – Irvine

Nominated by: CO Architects
Bluespace Interiors
Degenkolb
Hensel Phelps
Ridge Landscape
Stantec
tk1sc
UCI Health



Cedars-Sinai Marina Towers 5th Floor

Nominated by: Perkins&Will
Alan Noelle Engineering
Cedars-Sinai Health System
Lam & Tea Engineering
PIVOT Interiors
Quality First Woodworks
Tangram
TIS Construction Services



Hoag Pediatrics Clinic 114 Pacifica

Nominated by: Gensler
California Commercial
Christopher's Inc.
Hoag
Solid Rock
TK1SC
West Coast Build
WSP



Rodeo Drive Women's Health Center

Nominated by: SAA interiors + architecture
Anderson Real Estate
IDG Structural Engineering
Rodeo Drive Women's Health Center
Stanhope Company Contractors
Timber Commercial
WM Group West Engineers



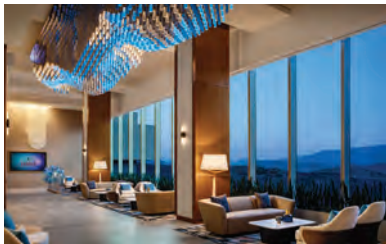
Fleurette

Nominated by: Studio UNLTD
American Assets
Cohn Restaurant Group
Equity Builders
Fleurette
KRBS
Maura Clark Studio



JADE

Nominated by: Scala Studio
Atelier Colon
Holwick Constructors, Inc.
Moon Group
Padaro Development
Redraw + Atelier OHYO
Two Point
Woodtech Studio



Jamul Casino Resort

Nominated by: JCJ Architecture
C.W. Driver
G2 Consulting Engineers
Jamul Casino Resort
KPFF
Ruzika



Maydan Market

Nominated by: NCA Studio
Engineered Solutions
ITX Construction
Maydan Market
Paniagua Inc.
Preen, Inc.



Monaco Italian Kitchen

Nominated by: H. Hendy Associates
CB Kenner
CT Design Inc.
Emmes Realty Service
Monaco Italian Kitchen
Southern California Restaurant Design Group



San Diego Padres Western Metal Supply Co. Building Renovations

Nominated by: Gensler
Ashley Donohue Procurement
Heritage Architecture
San Diego Padres
Shawmut
Tecture



The Delta Lounge

Nominated by: Studio Gensler
Arup
Clune Construction
Davinci Marble
Delta Air Lines
Dragos Marble
Pulp Studios
Seeley Brothers



Vaca

Nominated by: Studio UNLTD
Brookfield Properties
Howard CDM
Kitchen Restaurant & Bar Specialists (KRBS)
Vaca Restaurant Group



ZARA, THE GROVE

Nominated by: Gensler
Coffman Engineers
Inditex / Zara USA
JRM Construction West, LLC
M-Engineering
Studio Zara



Ancora

Nominated by: Vida Design
Ancora
Greystar
Maryam Turkey
Sarah Dehandschutter



Cloud House

Nominated by: H. Hendy Associates
AO
Bonanni Development
JMI
MJS
Spectacle, Inc.



Figueroa Eight

Nominated by: Rottet Studio
Englekirk Structural Engineers
Glumac
Johnson Fain
Lendlease Construction, Inc.
Lendrum Fine Art
Mitsui Fudosan America
RELM



Paxton

Nominated by: Vida Design
Betty Larkin
H Bloom
Holland Construction
Holland Partner Group
Lusive
Sanwood Fine Carpentry and Construction, Inc.



Altadena Girls Community Center

Nominated by: Studio AUX Architecture
Altadena Girls
BCCI Construction
Gardiner & Theobald
Kuzco Lighting
Maharam
Only Shades LA
Pinnacle Communication Services



Heartburst, Confidential Lifesciences Campus

Nominated by: OFFICEUNTITLED
ARUP
Clune Construction
Edwards Lifesciences
SEAD



Navy Seal Museum

Nominated by: ID Studios, Inc.
Burger Construction
BWE
Exhibit Concepts
G&A
H+W
Navy Seal Museum San Diego
Turner & Townsend



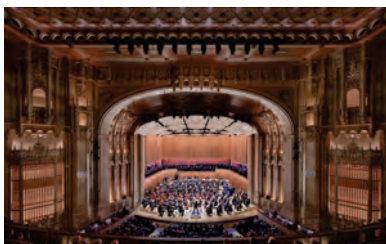
Orange County Health Care Agency

Nominated by: Gensler
KPFF
OC Health Care Agency
PCL
Waveguide
WSP



San Diego International Airport Terminal 1 & Roadways

Nominated by: Gensler
Nova Jiang
San Diego County Regional Airport Authority
Security Column Artwork
Studio James Carpenter
Turner Construction Company
Yellowgoat Design



San Diego Symphony Orchestra – Jacobs Music Center Renovation

Nominated by: HGA
Akustiks
BWE
Rudolf & Sletten
San Diego Symphony Orchestra
Schuler Shook



California State University at Long Beach Student Union

Nominated by: Gensler Los Angeles
Cal State Long Beach
John A. Martin & Associates, Inc.
Penta
Webb



Centennial High School

Nominated by: DLR Group
Compton Unified School District
Cumming Group
Interface Nora Rubber Flooring
Pacific Architectural Solutions



Downtown Thousand Oaks Civic Arts Plaza Building

Nominated by: SmithGroup
City of Thousand Oaks
KPF
RRM Design Group



Luxury Apartment Tower in Downtown San Diego, CA

Nominated by: AC Martin
Daltille
Goldrich + Kest
Shaw Contract
Steelcase
Swinerton



Palisades Charter High School

Nominated by: DLR Group
Brandow & Johnston
Kimley Horn
Los Angeles Unified School District
MSI
Roshanian & Associates



San Diego College of Continuing Education - Educational Cultural Complex

Nominated by: HGA
Beckmann Acoustics
Degenkolb Engineers
JUST Design
P2S Engineers
PCL Construction
San Diego Community College District
The Shalleck Collaborative



Boot Barn Headquarters

Nominated by: Ware Malcomb/The Heartland Interior Design
Boot Barn
Howard Building Corporation
JLL
Taber Company
TKISC



Confidential Media Campus

Nominated by: Terrain
11kps
ARC Engineering
Holmes Structures
Mollenhauer
Pacific Edge Projects
Swinerton
Tangram



Confidential Media Client

Nominated by: Gensler
AMA Group
Angel City Lumber
Krismar Construction
Sheridan Inc.
Tangram
Webb



Global Fashion Retailer

Nominated by: Revel Architecture & Design
AMA/ Henderson Engineers
Hohbach Lewin, Inc.
JLL
Sierra Pacific Construction
Systems Source



Hudson Pacific HQ

Nominated by: Gensler
Alfa-Tech
Glotman Simpson
Howard Building Corporation
Hudson Pacific Properties
Oculus Light Studio
RWDI Acoustic Design
Unisource Solutions, LLC



International Fintech Company Confidential

Nominated by: O Arch, Inc.
HITT Contracting, Inc.
Icon Consulting Engineers, Inc.
Pascoe Dirpes & Associates
The Irvine Company



Leidos

Nominated by: LPA
Alexandria Real Estate Equities, Inc.
DPR
GroundLevel Landscape Architecture
MBI (formally Akela)
MPE



Sheppard Mullin

Nominated by: Studio Alliance
ARC Engineering
Clay Enterprises
Flux Studio Ltd
Integrated Media Technologies, Inc.
Sheppard Mullin
Taslimi Construction



SKIMS/Good American

Nominated by: ODAA
ARUP
Corporate Contractors
Newmark
Pinnacle
Studio Other/ Tangram



Sony Pictures Entertainment

Nominated by: RIOS
Howard Building Corporation
Oculus Light Studio PLANNET
RWDI
Sony Music Entertainment
Structural Focus



Ventura Foods

Nominated by: H. Hendy Associates
JLL
KPRS
Ventura Foods
WSP



Vividion Tenant Improvement

Nominated by: McFarlane Architects
Alexandria Real Estate Equities
DPR Construction
Elluminet an Elen Studio
ICE (Innovative Commercial Environments LLC)
McParlane & Associates
MPE Consulting



Vuori Headquarters

Nominated by: Ware Malcomb
Bandak Project Management
Burger Construction
Cruzan
Vuori



White & Case Los Angeles Expansion & Renovation

Nominated by: Perkins&Will
EvensonBest
Howard Building Corporation
Nabih Youseh Associates
Oculus
Syska Hennessy
White & Case



Willkie, Farr & Gallagher, LLP

Nominated by: Gensler
Clune Construction
KGM Lighting
MR Walls
Seeley Brothers
Studio Other
Tangram
Willkie, Farr & Gallagher



Yamaha Music Corporation of America Headquarters

Nominated by: Gensler
KPFF
KPRS
Syska Hennessy
Tangram
Yamaha Corporation of America



Confidential Client Media Space

Nominated by: Gensler
ARC Engineering
GCX
IMEG
Oculus Light Studio
Pivot Interiors
Watchdog



Confidential Law Firm

Nominated by: HLW
ARC Engineering
HITT
Luminarch Studio
Sheridan Group
VVA



Confidential Tech Client

Nominated by: SmithGroup
Ehmcke Sheet Metal Corp.
Skyline Construction
SPMDesign
WB Powell



Davis Wright Tremaine, LLP

Nominated by: DIALOG San Francisco / Wolcott Architecture
Davis Wright Tremaine, LLP
Howard Building Corporation
Lam & Tea
Michael Wilson Architectural Photography
PeopleSpace
Savills



Gensler Los Angeles Office of the Future: Phase II

Nominated by: Gensler
ARC Engineering
Oculus Light Studio
Tangram
Tectonics Construction
Western Office



Gibson Dunn Century City

Nominated by: Gensler
ARC Engineering
ECC
Gibson Dunn
J&V Construction
Station 22 Studio
VVA
Western Office



Insight Global - Los Angeles

Nominated by: ASD|SKY
Alfa Tech
Corporate Environments
Esplanade Builders, Inc.
Insight Global
Interface/FLOR
Maharam
Turf



Mirador Tenant Improvement

Nominated by: McFarlane Architects
BioScience Property Investments
Coffman Engineers Inc.
ICE (Innovative Commercial Environments LLC)
JB Pacific
MA Engineers



theTradeDesk – Los Angeles

Nominated by: HOK
AMA Group
Calico Wallpaper
JB3D
Sharpe Interior Systems, Inc.
Sierra Pacific Constructors
Tangram
theTradeDesk



UNILEVER : Health and Wellbeing Hub

Nominated by: Scala Studio
Ad Impact
JLL
Moshiri Associates, Inc.
Peoplespace
Sierra Pacific Constructors
Simon S. Wong & Associates
Unilever



Alliance Funding Group

Nominated by: Kamus + Keller Interiors and Architecture
Alliance Funding Group
CG Solid Surface
ECC
PeopleSpace



A new stage for an LA powerhouse – The Azoff Company

Nominated by: M Moser Associates
Art Department
BCCI
Sharpe Interior Systems Inc.
Summit Construction Management
Tangram
The Azoff Company



Confidential Client

Nominated by: STUDIOS Architecture
AMA Group
Banks Landl
Holwick
PeopleSpace
RWDI
Team Werc



Confidential Financial Services Firm

Nominated by: Gensler
ARC Engineering
Howard Building Corporation
JLL
Luminarch Studios
Seeley Brothers
Tangram



Confidential Medical Institute

Nominated by: HOK
AVI-SPL
BnB Builders
KPFF
Oculus Light Studio
RWDI



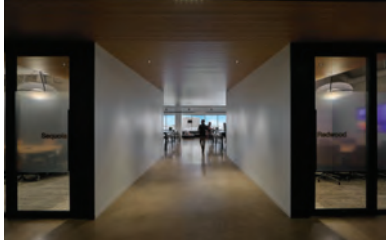
Downtown Los Angeles Interdisciplinary Design Firm Office

Nominated by: SmithGroup
Bask
Haworth
Howard Building Company
OFG / Teknion
Studio Other
Taber Company



e.i.f. Beauty

Nominated by: Revel Architecture & Design
AlfaTech
Cushman Wakefield
e.i.f. Beauty
Inside Source
JTMagen



Goodman

Nominated by: LPA
CBI
Goodman
LBA Realty
Turelk
WSP



Hyphn San Diego Experience Center

Nominated by: Hollander Design Group
Falkbuilt
Hyphn
JVA
Old Fashioned Lumber
Pacific Building Group
Steelcase



Lightspark

Nominated by: Rapt Studio
ARC Engineering
Banks Landl Lighting Design
Blik Studio
GCX
Pacific Edge Projects
Tangram Technology
Western Office



Mother LA

Nominated by: Shadow Architect
AT Designs
Curato Design Build
Fundrise
HLW
Marcos Construction
Mother LA



PUMA Studio

Nominated by: West of West Architecture + Design
Bardas Investment Group
Howard Building Corporation
Oculus Light Studio
Office of BC
Offset Structural Engineering
PUMA



Risewell Homes Irvine Headquarters

Nominated by: Gensler
Howard Building Corporation
Light Build Design
MAARS
Risewell Homes
SRSS
Tangram
TK1SC / WSP



San Diego Gas and Electric (SDG&E) Resilience Center

Nominated by: HED
Armstrong Ceilings
Drew George Partners, Inc.
Glumac
GMBI
San Diego Gas & Electric
Storyline
Swinerton



Savills LA

Nominated by: FORMM
Bernhardt Design
Enginova
RAM Construction
Savills
Studio Other



theTradeDesk - Irvine

Nominated by: HOK
AMA Group
SGH
Sierra Pacific Constructors
Tangram
the Trade Desk



Troutman Pepper

Nominated by: ASD|SKY
GMBI
PDA Engineers
Troutman Pepper
West Broadway Construction



Berkeley Research Group

Nominated by: Gensler
Berkeley Research Group
Environments at Work
Howard Building Corporation
KPFF
Newmark
SCI Lighting Solutions
WM Group



BPM Long Beach

Nominated by: SAA interiors + architecture
Accurate Laminated Products, Inc.
BASK
BPM
Light Build Design
Turelk, Inc.



DLR Group Riverside Office

Nominated by: DLR Group
Haworth
HITT
KCAV
Mohawk Group
Unisource Solutions, LLC
Vision Consulting Services



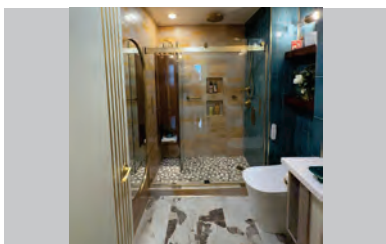
Globant at Intuit Dome

Nominated by: Moshiri Associates, Inc.
AM Cabinets, Inc.
Clippers
Globant
JLL
Sharpe Interior Systems, Inc.
Sierra Pacific Constructors
Simon S. Wong & Associates



Lighthouse

Nominated by: Wolcott Architecture
ARC Engineering
GLLB Studio
KPFF
Lighthouse Real Estate
Pinnacle Contracting Corporation



Remodeling a standard Bathroom to Masterpiece

Nominated by: Rapha Interiors
Daltille
Kohler
Mariana Wassef
TCPN INC



San Diego Architecture & Engineering Office

Nominated by: SmithGroup
Daltile
Hyphn & Fringe
Shaw Cotntract
Simple Roots Plant Design
Skye Walker Art
Swinerton



San Diego Financial Firm

Nominated by: IA Interior Architects
Burnham
Cerami
CMTA
HITT Contracting
KPFF